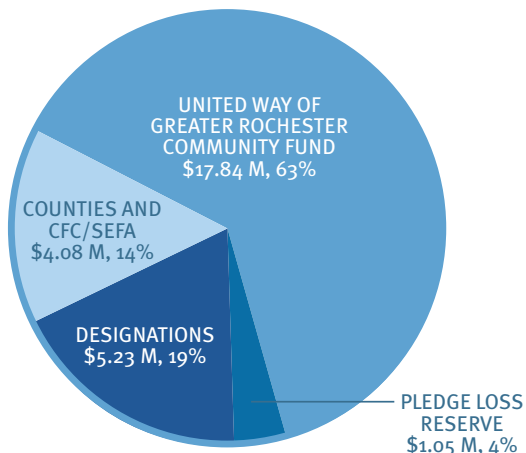


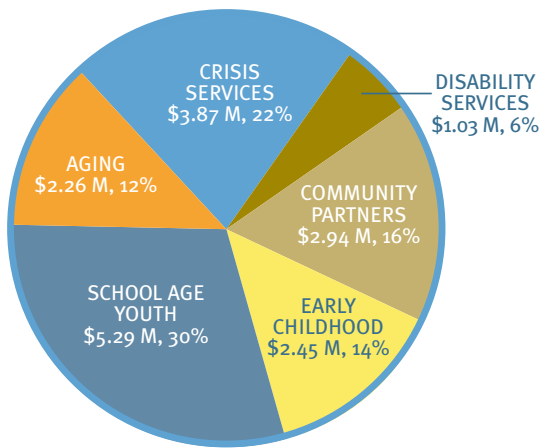
UNITED WAY: INVESTING IN OUR COMMUNITY

TOTAL 2011 UNITED WAY OF GREATER ROCHESTER DONATIONS



The Greater Rochester community donated over \$28 million during United Way's 2011 campaign. These funds go to support United Way's work through the Community Fund, the five regional United Ways operating in our neighboring counties of Genesee, Livingston, Ontario, Wayne and Wyoming, and other not-for-profits based on donors' personal designations.

2011-12 UNITED WAY OF GREATER ROCHESTER
COMMUNITY FUND ALLOCATIONS



Thanks to the generosity of our Community Fund donors, United Way is able to provide \$17.84 million in funding to almost 80 programs that help over 500,000 people in Monroe County throughout this year. Working together, we continue to address critical challenges and make real change in our community.

CHANGE STARTS WITH YOU. MAKE YOUR GIFT TO UNITED WAY'S COMMUNITY FUND TODAY.

Last year alone, United Way's Community Fund helped over 500,000 people in Monroe County overcome crisis, become better students, live independently and be great parents. Working together, we make real change in our community.

For more information on how United Way's Community Fund helps people in the Greater Rochester area visit www.uwrochester.org.



Constellation

CONSTELLATION BRANDS COMMUNITY FUND CHALLENGE

Give to United Way's Community Fund today and your gift will be doubled! For more information please visit uwrochester.org/challenge

GIVE. ADVOCATE. VOLUNTEER.
LIVE UNITED 

United Way of Greater Rochester
75 College Avenue
Rochester, NY 14607-1009

www.uwrochester.org

CHANGE starts here.

United Way's Community Fund

▶ TAKE THE CONSTELLATION BRANDS
COMMUNITY FUND CHALLENGE
See back for details



GIVE. ADVOCATE. VOLUNTEER.
LIVE UNITED 

YOU HELP PARENTS LIKE ME . . .



... make sure our kids are happy, healthy and prepared with the skills needed to learn.

\$2.45 million is invested in **EARLY CHILDHOOD** programs delivering parent education and early intervention programs:

- Building Healthy Children
- Catholic Family Center
- Children's Institute
- Crestwood Children's Center
- Ibero-American Action League
- Mary Cariola Children's Center
- Mt. Hope Family Center
- Nurse-Family Partnership
- Rochester Hearing and Speech Center
- Society for the Protection & Care of Children
- Urban League of Rochester

YOU HELP STUDENTS LIKE ME . . .



... stay on the road to success with homework help and a safe place to play with my friends.

\$5.29 million is invested in **SCHOOL AGE YOUTH** programs delivering after school and summer enrichment, mentoring and early intervention programs:

- Baden Street Settlement
- Big Brothers/Big Sisters
- Boy Scouts
- Boys and Girls Club
- Center for Youth Services
- Charles Settlement House
- Children's Institute
- Community Place of Greater Rochester
- Compeer
- Girl Scouts
- Hillside Work-Scholarship Connection
- Ibero-American Action League/PRYD
- School of the Holy Childhood
- SWAN
- Urban League of Rochester
- YMCA
- YWCA

YOU HELP OLDER ADULTS LIKE US . . .



... stay in our home while having a place to engage in our community, enhance our skills and stay young at heart.

\$2.26 million is invested in **AGING** programs delivering case management and support, and caregiver support programs:

- ABVI-Goodwill
- Alzheimer's Association
- Catholic Family Center
- Community Place of Greater Rochester
- Family Service of Rochester
- Jewish Family Service
- Lifespan
- Medical Motor Service
- Rochester Hearing and Speech Center
- Urban League of Rochester
- Visiting Nurse Service

YOU HELP PEOPLE LIKE ME . . .



... get past a time in our lives when we are facing a crisis and come out stronger and happier than ever.

\$3.87 million is invested in **CRISIS SERVICES** programs delivering basic needs, homelessness prevention and housing stability programs:

- AIDS Care
- Alternatives for Battered Women
- Baden Street Settlement
- Catholic Family Center
- Center for Youth Services
- Charles Settlement House
- Community Place of Greater Rochester
- Crisis Nursery
- Empire Justice Center
- Foodlink*
- Hillside Children's Center
- Housing Council
- Ibero-American Action League
- Legal Aid Society
- Monroe County Legal Assistance Center
- The Salvation Army
- SWAN
- Volunteer Legal Services Project

*United Way has a non-financial partnership with Foodlink for the critical provision of food for the funded Crisis Services programs

YOU HELP PEOPLE WITH DISABILITIES LIKE ME . . .



... get the support and resources needed to go through a key transition.

\$1.03 million is invested in **DISABILITY SERVICES** programs delivering transportation services and transition coaching programs:

- Arc of Monroe County
- Center for Disability Rights
- Epilepsy Foundation
- Lifespan
- Medical Motor Service
- Mental Health Association
- National MS Society
- Rochester Rehabilitation

YOUR GIFT ALSO . . .



... funds key Community Partnerships, provides program evaluations in each investment area and supports not-for-profit sustainability.

\$2.94 million is invested in **COMMUNITY PARTNERSHIPS** including:

- 2-1-1, in partnership with ABVI/Goodwill
- ACT Rochester, in partnership with the Rochester Area Community Foundation
- American Red Cross
- C.A.S.H., in partnership with Empire Justice Center
- Not-for-Profit Sustainability Initiative
- PAVE, in partnership with Camp Good Days and Special Times